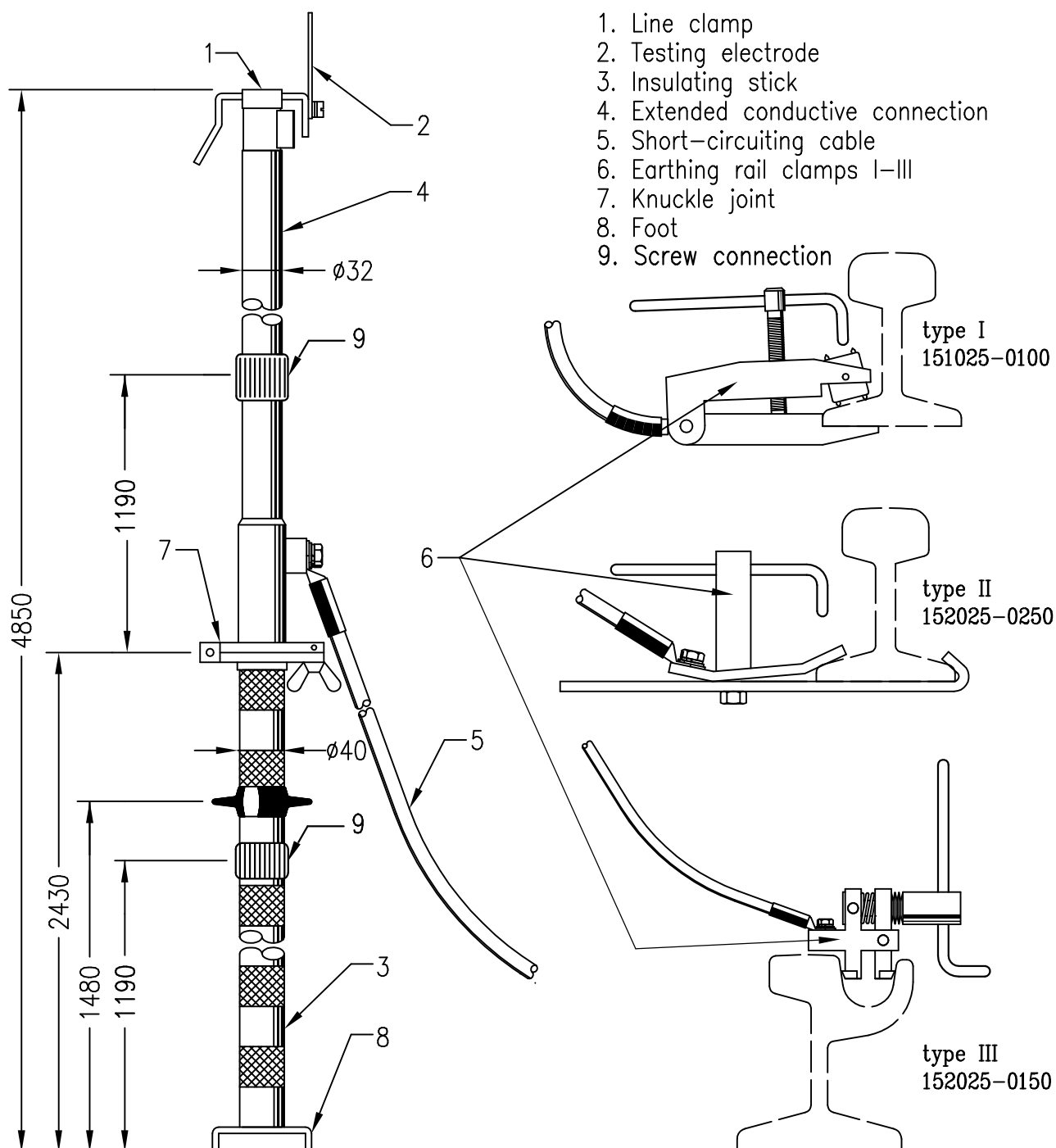




SHORT-CIRCUITING SET UTTV 25

type 152025D

The short-circuiting set is designed for use on traction lines of DC and AC voltage system up to 27.5 kV.



TECHNICAL SPECIFICATIONS

The line clamp is connectable to:
-traction line 80-150 mm²

Rated voltage:	27,5 kV
Current-carrying capacity	800 A/10min
Short circuit rating:	10 kA/1sec
Cable cross-section:	50 mm ²
Cable length:	14 000 mm
Weight:	14,5 kg

The short-circuiting set are supplied in casing.
Manufactured according to ČSN EN 61230 and ON 359708.