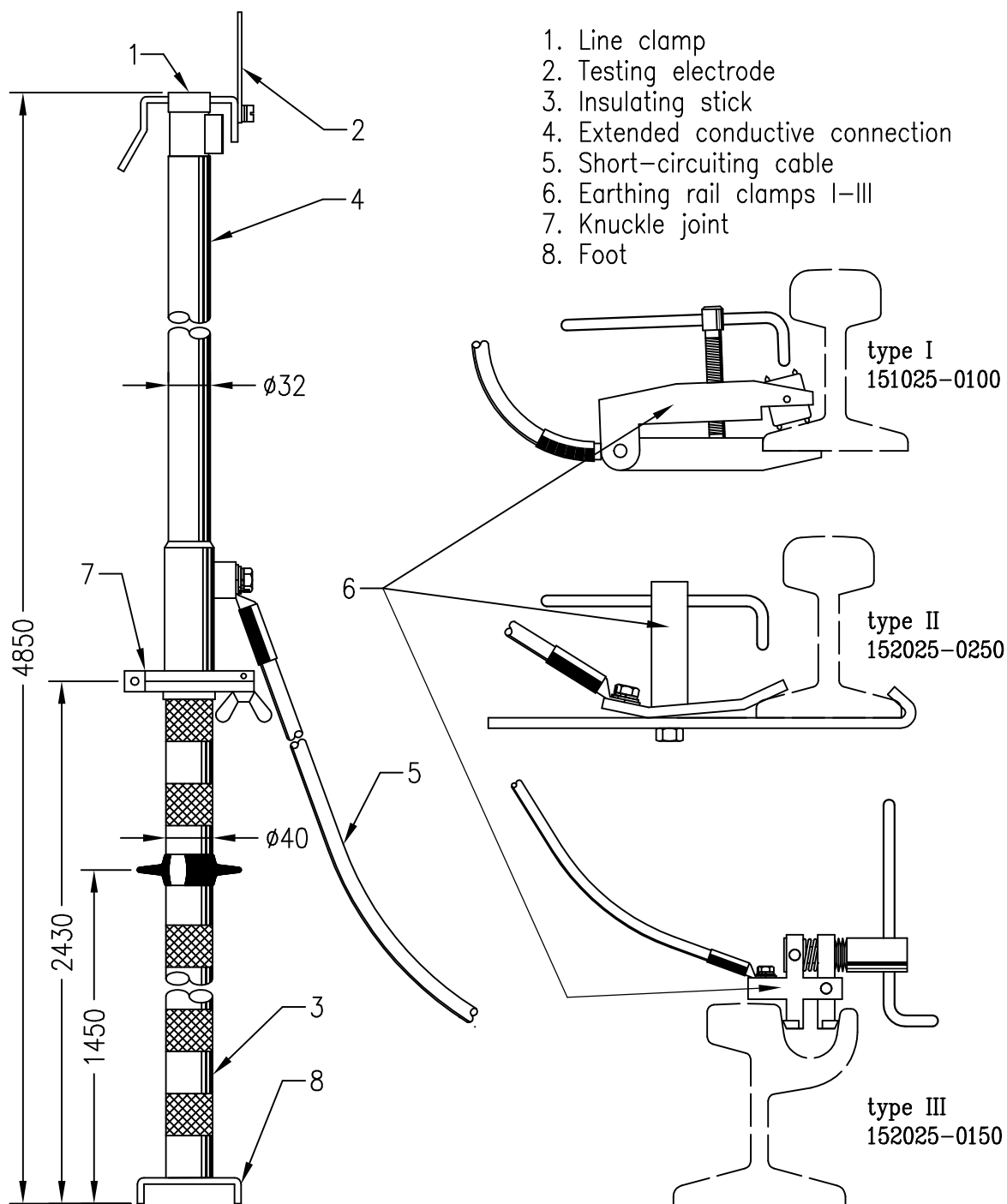




The short-circuiting set is designed for use on traction lines of DC and AC voltage system up to 27.5 kV.



TECHNICAL SPECIFICATIONS

The line clamp is connectable to:

-traction line 80-150 mm²

Rated voltage:

27,5 kV

Current-carrying capacity

800 A/10min

Short circuit rating:

10 kA/1sec

Cable cross-section:

50 mm²

Cable length:

14 000 mm

Weight:

14 kg

Manufactured according to ČSN EN 61230 and ON 359708.